

# STROMER

POWER

## Comprehensive Specification Sheet

Low-Voltage AC Alternator  
Electrical and Mechanical Data



# STR0-25K

22.5kVA Prime / 24.8kVA Standby  
Three Phase / 50Hz / 4 pole

## World-Class Alternators

Setting new standards in all aspects from design, manufacturing, material selection and production to testing equipment, tooling and quality control.

**Tough:** Our alternators are trusted as a component in the production of stationary diesel generator sets, mobile power plants and other power generation equipment which is supplied to various commercial, agricultural, refrigeration, residential, government and military services.

**Trusted:** Our product is highly regarded for its superior quality and performance. The alternators are used as the main power supply for three major satellite launch bases, for a station in Antarctica and for a spacecraft series.

**Tested:** Our products are thoroughly tested in different environments to ensure unsurpassed quality and reliability. Our stringent tests verify overall performance and align our products with most internationally-recognised standards.

## Standards

- StromerPower alternators meet all key international standards and regulations
- The 4-pole alternator complies with the following major domestic and international standards and regulations: GB755, BS5000, IEC60034, VDE0530, CSAC22.2 100 and NEMA MG-1.22
- It is designed, manufactured and marketed in an ISO 9001 quality assurance environment
- Alternator can be integrated in CE-marked generator set

## Electrical Characteristics and Performance

- Class H insulation
- 2/3 pitch winding
- **Voltage Range:** 50Hz: 220v - 240v and 380v - 415v (440v)
- High efficiency and motor starting capacity
- Low reactances

## Specifications Overview

Three Phase / 50Hz / 400V / PF = 0.8			
Continuous		Standby	
kw	kVA	kw	kVA
22.5	24.8	25	27

Rated Frequency	Voltage	Voltage Regulation	Voltage Regulation Change	Phase Change Rate	Power Factor
Hz	v	v	% UN	%	
50	400	1%	5%	+/- 1	0.8

Insulation Class	Type	Phase and Connection	
H	IM B35	Three Phase	4 Pole

AVR Model	Stator	Rotor
SX460	2/3 Pitch	Single Bearing



- StromerPower enclosures are **IP23**
- All rotors are dynamically balanced in strict accordance with the requirements of the **ISO1940** standard
- Robust flanges and shields
- The large junction box makes wiring and adjustment of the AVR easier

- Space for current transformers or other optional modules to be installed
- Compact design and sturdy assembly to withstand generator vibrations
- All our alternators use long-term sealed bearings
- Steel base

- **Self-Excitation Standard**
- **Parallel Use:** When the appropriate modules (AVR, current transformer and control equipment) are installed, all 4-pole alternators can be used in parallel
- **Bearing Capacity:** NEMA specifications
- **Waveform:** According to the IEC standard, the total harmonic distortion rate is less than 5% under

- **Frequency:** To be used at a frequency of 50Hz (standard windings) (No. B31, B32)
- **Power Factor:** The alternator is designed for loads with a power factor of 0.8

Technical drawings of the AVR unit showing side and front views with dimensions and labels.

**Side View Dimensions:**

- Overall width: LB
- Distance from left edge to terminal block: 6.5
- Terminal block width: 15
- Distance from terminal block to air inlet: 229
- Air inlet width: 55
- Distance from air inlet to right edge: 50 (min)
- Distance from left edge to air inlet: 106
- Distance from air inlet to right edge: 106
- Overall height: P
- Distance from top edge to terminal block: 15
- Distance from terminal block to air inlet: 16
- Distance from air inlet to right edge: 242
- Distance from air inlet to right edge: 6-ø14

**Front View Dimensions:**

- Overall width: 440
- Overall height: 434
- Distance from top edge to terminal block: 180
- Distance from terminal block to air inlet: 279
- Distance from air inlet to right edge: 319
- Distance from left edge to air inlet: 279
- Distance from air inlet to right edge: 319
- Distance from top edge to air inlet: 180
- Distance from air inlet to right edge: 319

**Labels:**

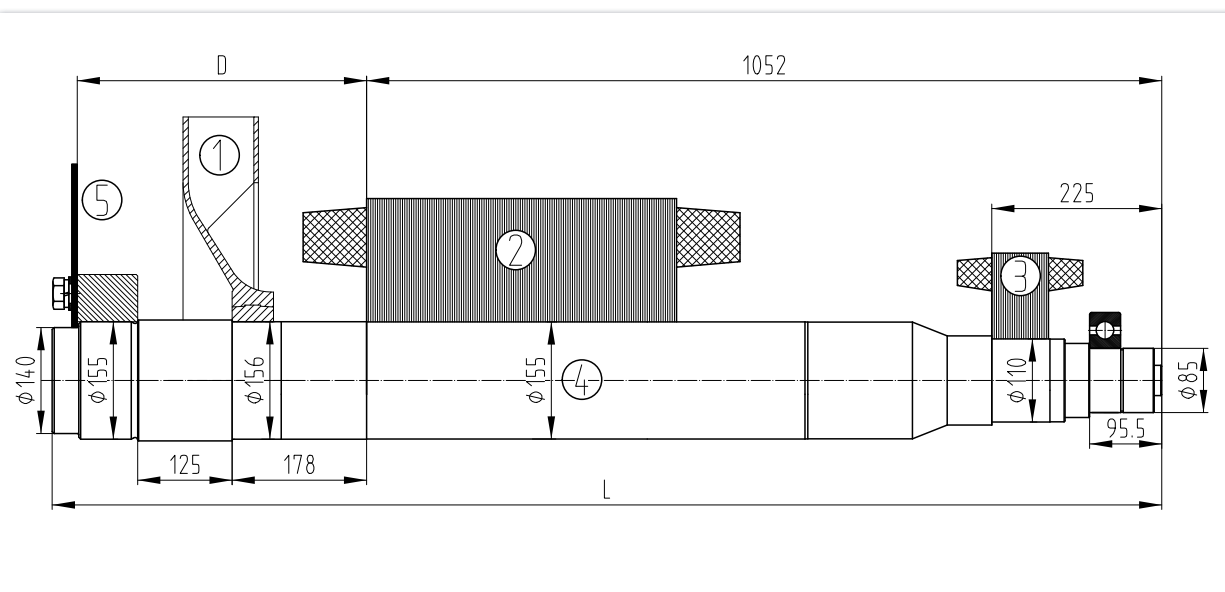
- 接端子位置 (Access to terminals)
- AVR位置 (Access to AVR)
- 进风口 (Air inlet)
- AR-øS 均布在 øM 上 (AR-øS are distributed on øM)
- AS DIA, AR Eq. Sp. as holes on øM P.C.D. (AS DIA, AR Eq. Sp. as holes on øM P.C.D.)

Model	LB	LC	Xg	Weight
	SAE			kg
STRO-25K	439	229	185	116

SAE	BX	AM	AR - ØAS	AH
	mm			
7.5	241.3	222.25	8 - Ø9	30.2

SAE	P	N	M	R - øS	W	D	a°
	mm						
4	400	361.95	381	12 - ø11	5	133	15

## Torsional Analysis Data



Fan		Main Rotor		Excitation Rotor		Shaft		Total	
Weight (kg)	J(kgm²)	Weight (kg)	J(kgm²)	Weight (kg)	J(kgm²)	Weight (kg)	J(kgm²)	Weight (kg)	J(kgm²)
0.652	0.00756	36.6	0.1673	6.7	0.0197	8.1	0.0031	52.052	0.19766

SAE	5	Shafts Coupling Flex Plate		
	D	L	Weight (kg)	J(kgm²)
4/7.5	133	439	1.1	0.0078

## Dimensions

Unpacked				Packed			
Length	Width	Height	Net Weight	Length	Width	Height	Net Weight
mm			kg	mm			kg
485	440	434	118	600	520	600	138

**STROMER**  
POWER

© StromerPower 2025

*The information contained in this brochure is for guidance only and does not form part of any contract.*

*The accuracy cannot be guaranteed as StromerPower have an ongoing process of development and reserve the right to change the specification of their products without notice.*

