

# STROMER

POWER

## Comprehensive Specification Sheet

Low-Voltage AC Alternator  
Electrical and Mechanical Data



# STRO-110K

100kVA Prime / 110kVA Standby  
Three Phase / 50Hz / 4 pole

## World-Class Alternators

Setting new standards in all aspects from design, manufacturing, material selection and production to testing equipment, tooling and quality control.

**Tough:** Our alternators are trusted as a component in the production of stationary diesel generator sets, mobile power plants and other power generation equipment which is supplied to various commercial, agricultural, refrigeration, residential, government and military services.

**Trusted:** Our product is highly regarded for its superior quality and performance. The alternators are used as the main power supply for three major satellite launch bases, for a station in Antarctica and for a spacecraft series.

**Tested:** Our products are thoroughly tested in different environments to ensure unsurpassed quality and reliability. Our stringent tests verify overall performance and align our products with most internationally-recognised standards.

## Standards

- StromerPower alternators meet all key international standards and regulations
- The 4-pole alternator complies with the following major domestic and international standards and regulations: GB755, BS5000, IEC60034, VDE0530, CSAC22.2 100 and NEMA MG-1.22
- It is designed, manufactured and marketed in an ISO 9001 quality assurance environment
- Alternator can be integrated in CE-marked generator set

## Electrical Characteristics and Performance

- Class H insulation
- 2/3 pitch winding
- **Voltage Range:** 50Hz: 220v - 240v and 380v - 415v (440v)
- High efficiency and motor starting capacity
- Low reactances

## Specifications Overview

Three Phase / 50Hz / 400V / PF = 0.8			
Continuous		Standby	
kw	kVA	kw	kVA
100	110	110	121

Rated Frequency	Voltage	Voltage Regulation	Voltage Regulation Change	Phase Change Rate	Power Factor
Hz	v	v	% UN	%	
50	400	1%	5%	+/- 1	0.8

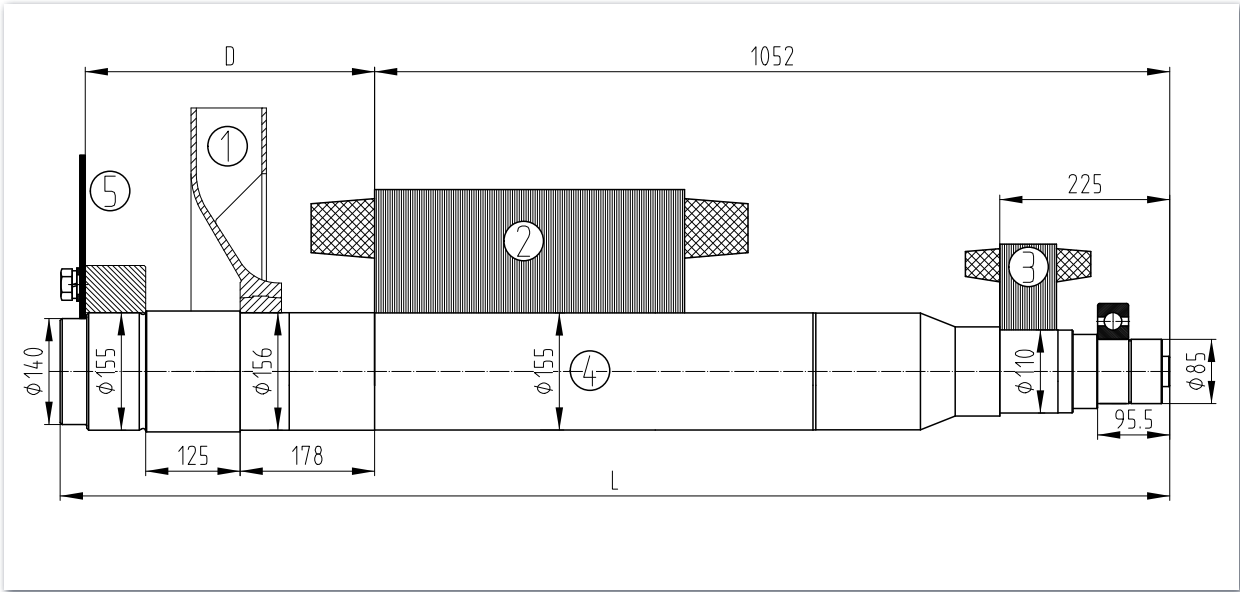
Insulation Class	Type	Phase and Connection	
H	IM B35	Three Phase	4 Pole

AVR Model	Stator	Rotor
SX460	2/3 Pitch	Single Bearing





Torsional Analysis Data



Fan		Main Rotor		Excitation Rotor		Shaft		Total	
Weight (kg)	J(kgm²)	Weight (kg)	J(kgm²)	Weight (kg)	J(kgm²)	Weight (kg)	J(kgm²)	Weight (kg)	J(kgm²)
1.112	0.017	81.5	0.5925	12.4	0.0966	22.3	0.0135	117.312	0.7196

SAE	5	Shafts Coupling Flex Plate		
	D	L	Weight (kg)	J(kgm²)
3/11.5	207.5	766	2.7	0.0428

Dimensions

Unpacked				Packed			
Length	Width	Height	Net Weight	Length	Width	Height	Net Weight
mm			kg	mm			kg
825	500	546	334	910	580	730	364

STROMER

POWER

© StromerPower 2025

The information contained in this brochure is for guidance only and does not form part of any contract.

The accuracy cannot be guaranteed as StromerPower have an ongoing process of development and reserve the right to change the specification of their products without notice.

